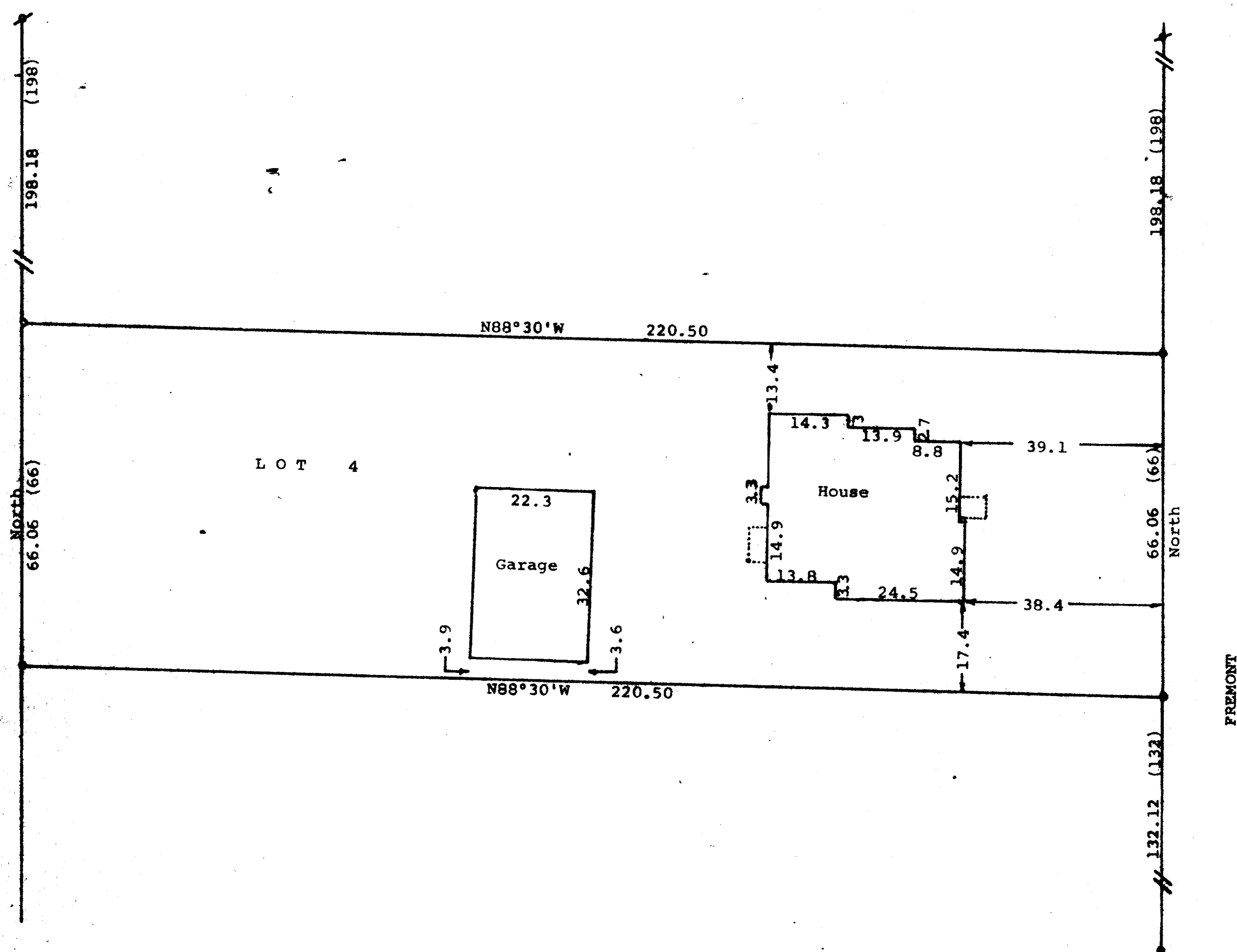


RECEIVED
AUG 19 1986



Scale - 1" = 20'
 * = 1" Iron Pipe Found
 • = 1" X 24" Iron Pipe Set
 • = Concrete Monument Found
 (0.00) = recorded distance
 Survey ordered by:
 Churchill Real Estate
 322 Park
 Walworth, WI 53184
 Bearings are referenced to
 the West line of Freemont
 Street, assumed bearing of
 North.

August 5, 1986

George T. Dunham
George T. Dunham, Surveyor

